

2041

THE EXPLORER'S PASSAGE
Where History Becomes Your Adventure!



LEADERSHIP ON THE EDGE PROGRAM

17 - 29 March 2022





LEADERSHIP ON THE EDGE PROGRAM

17 - 29 March 2022

Contents

PROGRAM OVERVIEW	2
PROGRAM FOCUS POINTS	3
High-Impact Leadership	3
Powerful Storytelling	4
Connected Learning	4
SAMPLE WORKSHOPS	5
Energy Solutions	5
Climate Change	5
Sustainability	5
Storytelling	6
Leadership	6
SAMPLE DAILY SCHEDULE	7
LEADERSHIP TEAM PROFILES	8
Robert Swan, OBE, Founder – 2041 Foundation	8
Barney Swan, Founder – ClimateForce	8
Jeff Bonaldi, Founder & CEO – The Explorer’s Passage	9
Michele Malejki, Sustainability Director	9
David Hone, Climate Change Director	10
Aldo Gomez, ClimateForce Solutions Director	10
Cameron Kerr, Expedition Leader	11
Marissa Cho, Deputy Expedition Leader	11
Elana Duffy, Deputy Safety Officer	12
Jessica Fleming, Co-Program Director	12
Winston Cowie, Co-Program Director	12
Caitlin Ryan, Logistics Director	13
Trenton Branson, Media Team Leader	13
Paulina Villalonga, Student Program Leader	14

PROGRAM OVERVIEW

The 2041 ClimateForce Antarctic Expedition boasts the most comprehensive onboard programming schedule of any Antarctic expedition. Our renowned “Leadership on the Edge” (LOTE) Program perfectly combines engaging education and immersive exploration to deliver you a life-changing experience. It consists of a unique blend of strategic leadership development, storytelling training, and connected learning that are centered around sustainability, climate change, and energy solutions. Its carefully crafted curriculum aims to supercharge your personal and professional journey towards becoming a champion of change.

The LOTE Program has been tested and refined for more than 24 years on over 30 expeditions. It incorporates seminars on skills that every effective leader must possess, such as well-structured presentation and public speaking skills. A series of strategic workshops will help diagnose your existing abilities and areas for growth. Prepare also to learn from global experts about glaciology, Antarctic history, renewable energy, climate science, and more during informative sessions from the icy, dynamic classroom that is Antarctica.

The collaborative nature of the program is what makes it unique and bonds all participants. As a platform for the open exchange of ideas, the LOTE Program aims to further develop new technologies and climate solutions so they may be implemented across the globe. Help sharpen your cross-cultural and team building skills by joining over 100 of the finest leaders and participants who have been hand-selected from 30 nations. They represent Fortune 500 businesses, start-ups, governments, leading universities and more.

It is important to note that upon acceptance into the program, YOU are responsible for and expected to extract the maximum value out of the expedition. Before you step foot on the ship, we will provide a number of pre-expedition assignments to help prepare you for the enriching adventure ahead, as well as introduce you to your fellow Explorers. It is critical that you complete these exercises to optimize your overall experience.



PROGRAM FOCUS POINTS

The LOTE Program's foundational elements of Leadership, Storytelling, and Connected Learning help to provide you with the skills necessary to kickstart your transformative journey and excel in your ambitious post-expedition endeavors.

High-Impact Leadership

Climate change is one of the most critical threats our world is facing. To address it, strong leadership that is aware of the consequences and is committed to taking action is required. Our method of helping you hone your skills as such a changemaker is to engage you through adventure-based and experiential learning. The Program will provide you with engaging exercises while onboard the ship as well as off it on Antarctic soil.

Learn directly from the best. Heading this year's leadership component is Elana Duffy, an honorable leader who actively served in the U.S. Army for 10 years in deployments around the world, including in conflict zones. After a roadside bomb changed her life and she medically retired, she drew upon her life experiences and formal training as an engineer to build a platform that uses artificial intelligence to help reintegrate veterans. Elana is eager to share her international leadership skills to help you develop your own.

The Program is further complemented by Robert Swan, one of the world's greatest polar explorers who was honored by Her Majesty Queen Elizabeth II. As the first person in history to walk to both the North and South Poles, he has exhibited extraordinary leadership skills under the harshest environmental conditions. As a seasoned global public speaker who never fails to uplift and stimulate his audiences, Robert has imparted the lessons he has learned to motivate thousands globally to be catalysts for change and is ready to do the same on the expedition.

Rounding out this team will be Jeff Bonaldi, a former Wall Street executive turned Founder and CEO of The Explorer's Passage, and Cameron Kerr, the Program's Expedition Leader and also a former U.S. Army officer. The Program is excited to provide these two proven leaders and exceptional individuals as resources to further build your capacity to lead. These leaders will share their personal successes and failures to help you gain new perspectives.

Powerful Storytelling

Strong storytelling and public speaking are common capabilities among the best leaders, and an integral part of the program. The ability to organize your thoughts into clear and concise messages and then communicate them to larger audiences is a skill that must be fine-tuned over time. Through individual coaching opportunities with our experts, you will learn to build and refine a powerful personal story to help you better connect with any audience to effect change and inspire others to action.

Robert Swan, who is one of the finest storytellers of our time, is thrilled to share his carefully designed storytelling framework which outlines his methods. He will walk you through his

approach on how to articulate ideas and concepts into speech and properly present them to a large audience.

As a capstone, you will have the opportunity to volunteer and apply your newly acquired skills by sharing your own story with the entire ship. Feedback will be provided by the 2041 ClimateForce team to aid in further building your skills and maximizing your impact.

Connected Learning

Con·nect·ed learn·ing | /kə-'nek-təd 'lær-nɪŋ/

noun

: Learning that goes beyond the traditional, formal educational pipeline to embrace social connection, as well as the diverse backgrounds and interests of all people. Learning that combines personal interests, supportive relationships, and opportunities.

Surrounded by like-minded individuals working toward the greater common goal of protecting our planet, you are sure to find support here and the courage to combat climate change. Grow your ambitions and ideas with us as we equip you with everything from actionable small, initial steps to bolder, large steps you can take to achieve your goals.

Learn about the most up-to-date information on salient issues from your peers and receive world-class education from the experts. Michele Malejki, the Global Head of Social Impact at HP, will teach you about corporate sustainability. David Hone, the former Chairman of the International Emissions Trading Association, will shed knowledge on climate change sciences. Learn about energy solutions from Barney Swan, who made history by trekking to the South Pole powered entirely by renewable energy, and Aldo Gomez, who is Aptiv's Global Director for Safety and Sustainability. Armed with your newfound knowledge, skills, and network, you will have the tools to make a meaningful difference in your communities, institutions, companies, and governments, as well as inspire others to achieve more.

Do you want to be a part of history in the making? You have the power to change the world. Join the LOTE Program and our efforts to solve the largest threat to survival that our earth faces. Take this step in joining a diverse group of sustainability changemakers across industries on the upcoming Expedition. Exchange ideas and become motivated together to take action back home to create a better future for our planet. Embark on this journey with us!

“The greatest threat to our planet is the belief that someone else will save it.”

-Robert Swan

SAMPLE WORKSHOPS

Energy Solutions

Speakers: Barney Swan & Aldo Gomez

- How Businesses Can Transform the Way They Utilize Energy
- Sustainability as a Vehicle for Improving Organizations' Financial Well-Being
- Simple Solutions We Can Implement Today to Reduce Our Carbon Footprint
- Utilizing Incentives as a Catalyst for Change
- Ways Corporations Can Educate Their Workforce to Foster Sustainable Operations

Climate Change

Speaker: David Hone

- Climate Change 101
- The Energy System and Its Related Technologies
- Examining Our Dependence on Fossil Fuels
- The History of Climate Change Action and the Arrival of the Paris Agreement
- The IPCC 1.5 Report: What It Means for Energy and the Politics Behind Climate Issues
- A Climate Scenario Model for the 21st Century
- The Energy Transition

Sustainability

Speaker: Michele Malejki

- Climate Finance 101
- The Business of Sustainability
- How to Integrate Sustainable Awareness into Your Businesses, Organizations, and Communities
- The Basics of ESG (Environmental, Social, & Corporate Governance)

Storytelling

Speaker: Robert Swan

- Public Speaking 101
- How to Craft Your Story to Create Impact
- Speaking with Confidence

Leadership

Speakers: Elana Duffy, Robert Swan & Jeff Bonaldi

- How to Become an Actionable Leader
- Leading Through Adversity
- Ways to Build a Community of Supporters for Your Cause
- Social Entrepreneurship: How To Start a Social Enterprise

SAMPLE DAILY SCHEDULE

We like to make the most of each day. The typical day is fairly intensive and extremely rewarding. While traversing the lively waters of the infamous Drake Passage, you will dive deep into lectures and workshops. Once in Antarctic waters, you will engage in immersive activities along the Peninsula such as hikes, beach exploration, Zodiac cruises, and wildlife watching. We are also excited to launch a "Polar Trek Simulator" this year on one of the shore landings. You will have the opportunity to pitch a campsite and haul a fully loaded sledge to experience what Robert, Barney, and some of our other leaders have done on the Antarctic Plateau en route to the Pole. Below is an example of what a day will look like.

- 7:00 - 8:00 AM** **Breakfast:** Fuel up for the exciting day ahead while sailing the pristine waters of the Crystal Sound
- 8:00 - 9:00 AM** **Climate Change Education:** Climate Change Director David Hone explains the importance of the Paris Agreement
- 9:00 - 9:15 AM** A fellow ClimateForce climate research team member from India reveals the effect of climate change on the country
- 9:15 - 9:30 AM** A fellow ClimateForce climate research team member from Abu Dhabi shares how the UAE is addressing climate risk among tremendous growth
- 9:30 AM - Noon** **Continental Landing in Antarctica:** Take an enlightening walk among Gentoo penguins, a species classified as “nearly threatened with extinction” by The International Union for Conservation of Nature, and leopard seals on the stunning Antarctic coastline
- Noon - 1:00 PM** **Lunch:** Indulge in fresh seafood from the Argentina coast and a delicious selection of vegetarian and vegan options
- 1:00 - 2:00 PM** **Sustainability Training:** Sustainability Director Michele Malejki engages group on the economics of sustainability in multinational organizations
- 2:00 - 2:30 PM** **Renewable Energies Session:** Intimate group discussion with ClimateForce Founder Barney Swan and ClimateForce Solutions Director Aldo Gomez on the future of renewables
- 2:30 - 5:00 PM** **Ocean-level Exploration:** Zodiac Cruise past majestic icebergs that have been sculpted by nature’s winds and currents, and watch for and photograph minke whales from your front-row seat
- 5:00 - 6:00 PM** **Break:** Free time to rest, view magnificent wildlife, or participate in curated small-group discussions with the expedition team
- 6:00 - 7:00 PM** **Leadership Development:** Leadership Director Elana Duffy provides key tools to overcoming adversity and building your impact mission
- 7:00 - 7:30 PM** **Storytelling Workshop:** Renowned global speaker Robert Swan provides 10 keys to success for delivering a world-class speech
- 7:30 - 9:00 PM** **Dinner:** Outdoor grilling on the ship’s upper deck under the spectacular Antarctic sky
- 9:00 PM - Late** **Networking & Socializing:** Unwind after an exciting day while enjoying international karaoke and guitar playing together

LEADERSHIP TEAM PROFILES

Robert Swan, OBE, Founder – 2041 Foundation

At the age of 29, after walking 900 miles (1,448 km) for 70 days hauling a 350-pound (159 kg) sledge, Robert and his team achieved the longest unassisted march in history to the South Pole in 1986. Three years later, Robert reached the North Pole with a few fellow explorers. This feat solidified his status as one of history's greatest explorers as he became the first person ever to successfully walk to both of Earth's Poles. He was awarded the Polar Medal by Her Majesty, Queen Elizabeth II and is a United Nations Goodwill Ambassador for Youth.



Robert's experiences at the Poles allowed him to witness the effects of climate change firsthand, causing him to shift his life's purpose toward promoting sustainability solutions to combat the world's greatest threat. In 1991, the noble French Explorer Jacques Cousteau tasked Robert with a 50-year mission to save Antarctica. The mission would be aptly named 2041, representing the year that the moratorium on drilling in Antarctica is due to expire. Jacques urged Robert to engage young people on the issues of climate change and promote the use of renewable energy. From this, Robert's 2041 Foundation was born.

Barney Swan, Founder – ClimateForce

Barney was born in London, raised in tropical Far North Queensland, Australia, and now lives and works in California. Being raised off-grid in Australia helped him develop an acute understanding of how valuable energy is, with conveniences often not being an option. On January 15, 2018, after skiing 600 nautical miles (1,111 km), Barney and two other explorers became the first team in history to trek to the South Pole powered entirely by renewable energy. This incredible feat marked the launch of the ClimateForce Challenge, a seven-year campaign which is committed to removing 360 million tons of CO₂ from the atmosphere.



On the Expedition, Barney will apply his experience in alpine mountaineering, risk management, technical sailing, and outdoor leadership to impart knowledge through his lessons on energy solutions. Using the LOTE Program as a platform for engagement, he will empower audiences with solutions, dialogue, and measurable action plans surrounding sustainable development.

Jeff Bonaldi, Founder & CEO – The Explorer’s Passage

Jeff’s objective is to use his organizations to help tackle the world’s most important social and environmental issues through adventures across the planet. He believes that business can be and should be used as a force for good. Prior to founding The Explorer’s Passage to enable social and environmental change through travel, Jeff spent 15 years in executive leadership roles in sales, marketing, and investment management within the global financial industry. He also participated on various industry advisory boards, and was part of a team appointed by the Federal Reserve Bank of New York tasked with creating a more stringent risk management industry framework following the global financial crisis.



The issue of climate change is a personal one for Jeff. He has been fortunate enough to have traveled to nearly 50 countries, and through his lived experiences in oceans, rivers, and mountains he has witnessed the unsettling effects of climate change. Through immersive learning and exploration, he hopes to help LOTE Program participants gain confidence and envision what is truly possible in their lives.

Michele Malejki, Sustainability Director

Michele is the Global Head of Social Impact Programs for corporate sustainability at Hewlett Packard (HP), a company rated America's Most Responsible Company in 2021 by Newsweek. In 2017, she was selected to participate in the Corporate Eco Forum’s Sustainability Leadership Development Program in Ecuador, and was a 2020 finalist for the Women in IT Awards “Advocate of the Year.” She previously served as a consultant for MIT Solve, and as the Deputy Director of Program at the Clinton Global Initiative, where she drove strategy and thought leadership for the organization.



Her international experience includes roles in Thailand and Malaysia at the Alliance for Financial Inclusion, and in Cambodia and Sub-Saharan Africa for One Acre Fund. Michele serves on a number of industry advisory boards and brings 15 years of global non-profit and private sector experience to her role as the LOTE Program’s Sustainability Director to drive lessons that create truly sustainable impact.

David Hone, Climate Change Director

David has been a refinery engineer, supply economist, oil trader, and held a number of senior positions at Shell International Ltd before taking up the role of Group Climate Change Advisor for the Shell Scenarios team. From 2011 to 2013, he was Chairman of the International Emissions Trading Association (IETA), a global business organization of 140 companies focused on the development of carbon markets and remains a board member. He also serves on the board of the Centre for Climate and Energy Solutions (C2ES) and the Global Carbon Capture and Storage Institute (GCCSI).



As the author of “Putting the Genie Back: Solving the Climate and Energy Dilemma,” David is looking forward to sharing his extensive experience with LOTE Program participants to raise awareness of climate change and the efforts required to fight it.

Aldo Gomez, ClimateForce Solutions Director

Aldo brings 22 years of environment, health, and safety (EHS) experience in the automotive industry to the table. He has held various roles ranging from operations to sustainable manufacturing and eco-design, and has led the implementation of energy and environmental management certifications at Aptiv. As Aptiv’s Global Director for Safety and Sustainability, Aldo strives to help the company achieve carbon neutrality by leading a global team to develop and implement the company’s sustainability strategy in alignment with the UN’s Sustainable Development Goals.



Aldo is also part of the sustainability steering committees for both the European and the American Automobile Manufacturers’ Associations. He was part of a select group of sustainability leaders that ventured to Ecuador as part of the transformative Sustainability Leadership Development Program organized by the Corporate Eco Forum in partnership with National Geographic. Aldo is proud to be the Expedition’s ClimateForce Solutions Director and is ready to inspire teams from all over the world to contribute to efforts against climate change.

Cameron Kerr, Expedition Leader

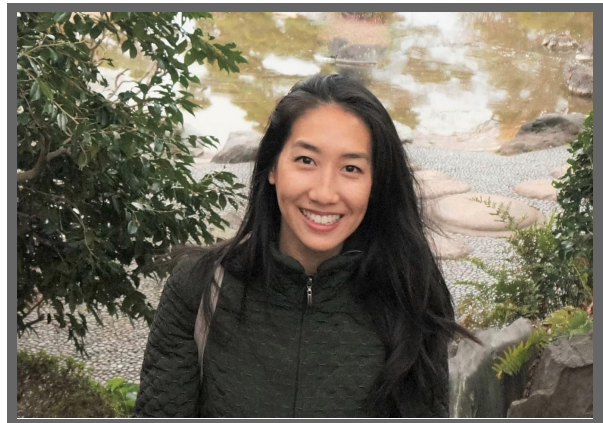
Cameron first experienced Antarctica on a similar journey with Robert Swan in 2012, and then completed a successful Last Degree expedition to the South Pole with Barney Swan in 2020. Anthropogenic climate change is something Cameron takes seriously. The lessons of the 2012 expedition inspired him to radically downsize his housing footprint, by designing and building an energy-conscious 180 square foot (17 m²) tiny house. This drastically reduced his energy consumption because tiny homes require a minute fraction of the energy used in standard-sized homes.



Previously, Cameron served as a U.S. Army officer and deployed twice to Afghanistan, where he was wounded in combat in 2011. Despite his injuries, he has never wanted to be limited so he has completed marathons as well as a 54-mile (87 km) endurance hike within 24 hours in the Scottish Highlands. As someone who knows the ugliness of war, one of the many reasons he appreciates Antarctica is because it is the only continent that has never seen human conflict. Instead, it is a place of peaceful exploration, scientific discovery, and true international cooperation - and Cameron strives to help it always remain this way. He is unabashedly addicted to the continent and thrilled to help LOTE Program participants experience its magnetism for the first time.

Marissa Cho, Deputy Expedition Leader

Marissa is the Marketing Director at The Explorer's Passage and previously spent seven exciting years working in East Asia to facilitate ethical international trade in the technology sector. While serving the world's top retailers and manufacturers in various industries such as electronics, smart building technologies, industrial automation, additive manufacturing, and security, Marissa was particularly drawn to her projects surrounding environmental protection technologies. In her work, she noticed many approaches to sustainability such as prevention and management through air quality control, waste management, and renewables, but two key components that stood out to her were education and advocacy that leads to action. Marissa believes a multidisciplinary approach and knowledge sharing between global players is key to the development and circulation of major solutions. This is why she is honored to be a part of this global operation.



With a Master's degree in Business Administration and having served as a Delta Leadership Coaching Fellow, she looks forward to bringing together brilliant minds in Antarctica to delve deeper into ways businesses, individuals, and governments alike can increase their social responsibilities to lessen our environmental impact. Marissa will ensure that the expedition runs smoothly so that LOTE participants can focus on finding ways to conserve our beautiful planet.

Adrian “Jumper” Cross, Chief Safety Officer

Jumper is a mountain- and arctic-trained ex-member of Her Majesty's British Forces. Jumper has been a key member of Robert Swan's team since 1998. An accomplished Ocean Yachtsman, he was instructed to lead an eight-member strong team to sail into the Antarctic by yacht. The purpose of this mission was to perform photographic reconnaissance, to record and to survey the 1,500 tons of rubbish, which Robert and his crew subsequently removed from King George Island. Jumper and his team also photographed sixteen global warming indicator sites along the Antarctic Peninsula; UNESCO awarded him for his effort in the year 2000.



Undertaking numerous expeditions into the ice alongside Robert and the team, he also worked on the Circumnavigation of Africa by the 2041 Foundation's yacht "2041" and its South African crew. Presently his skills are still used in the Bristol Marine Academy as a Safety & Training Consultant based in the UK.

Elana Duffy, Deputy Safety Officer

Elana (Lana) worked in civil engineering before enlisting in the U.S. Army as an Intelligence Collector, Interrogator, and Counterintelligence investigator. During her 10 years of active service, she was assigned around the world including deployments to both Afghanistan and Iraq. After an encounter with a roadside bomb, she was medically retired from the Army in 2012 and awarded a Purple Heart medal.



Elana returned to NYC to build www.pathfindervet.com, a platform using artificial intelligence to assist fellow veterans and families reintegrating after service. The platform allows them to share their experiences with local support resources, as well as provides these resources with the analyses needed to improve their programs and communities. She subsequently earned a Master of Business Administration degree with a focus in Information Systems and Business Analytics and is conducting research to better understand personality and motivation impacts on behavior through custom integrations of artificial intelligence, deep learning neural networks, and natural language processing algorithms. Backed by her extensive experience, Elana will help sharpen LOTE Program participants' leadership skills.

Jessica Fleming, Co-Program Director

A certified personal trainer with an avid love for mathematics and science, Jessica holds a Bachelor's degree in Mechanical Engineering and a Master's degree in Interdisciplinary Engineering with a concentration of Astronautics and Aeronautics. With expertise specific to the field of thermodynamics, heat transfer, and dynamic systems, Jessica has worked in a myriad of industries including engineering solutions for commercial, residential, and military applications. Currently employed at Carrier Corporation (formerly United Technologies), she is inspiring others to take action on corporate sustainability, innovation, employee education, and policy.



Jessica is an inquisitive adventurer and amateur photographer, who is also passionate about sustainability, green technologies, and the preservation of the environment. Her deep interest in the environment led to her participation with the 2041 Arctic Expedition in 2019. Driven by her unrelenting pursuit to revolutionize the traditional engineering style, Jessica is focused on cultivating purposeful and conscious engineering. Her ultimate goal is to work in the field of astronautics with an emphasis on anthropogenic and orbital debris mitigation, with the objective of safely de-orbiting satellites and other debris fragments to sustain Earth's lower, geosynchronous, and graveyard orbits.

Winston Cowie, Co-Program Director

Originally from New Zealand and based in the United Arab Emirates, Winston is the Manager of Marine Policy at the Environment Agency - Abu Dhabi (EAD). Awarded the Middle East Sustainability Manager of the Year in 2021, his portfolio includes marine fisheries management, climate change adaptation, single use plastic and marine litter, aquaculture, integrated coastal zone management, and endangered species conservation. He previously worked as a lawyer before choosing to pursue his passion for marine conservation, pursuing a Master of Science degree in Nature, Society and Environmental Policy from the School of Geography and Environment at Oxford University.



Winston sees film as a positive way to facilitate environmental behavioral change. He is also an award-winning film director whose films have screened on National Geographic, an author of discovery history and the New Zealand Land Wars, and a Fellow of the Royal Geographical Society. In Antarctica, Winston was a member of EAD's Team Zayed that voyaged with Robert Swan in 2018, sending a message in solar lights to the world about climate change. The documentary he directed, Zayed's Antarctic Lights, screened on National Geographic and won a World Medal at the New York Festivals TV and Film Awards.

Caitlin Ryan, Logistics Director

Born and raised in the heart of the Rocky Mountains in Bozeman, Montana, Caitlin has developed a life-long appreciation for a healthy natural world. A 25-day self-assisted raft trip through the Grand Canyon intensified her reverence for nature and desire for adventure.

Outside of the United States, Caitlin has lived in both Italy and New Zealand and spent two years traveling Europe, the Philippines, and Northern Africa which galvanized her interest in facilitating the vital cultural connection between humans and the environment. With a degree in Psychology and Business Administration and aspirations of higher education, she is exploring the impacts on the human psyche caused by degradation of the environment, which led her to the 2041 mission to preserve Antarctica.



Trenton Branson, Media Team Leader

Providing web management and visual media for over 15 years, Trenton started his business, WiDABi (Web, inspired Design, Advertising, & Brand identity) at a young age, with a varied skill set, and a goal to assist organizations that support community, wellness, and our planet. He shares his reverence for the Earth by creatively using photos and video to showcase the limitless beauty of nature and tell the stories of those devoting their time to our planet. Trenton's work has been recognized in several ways including 1st place in the Congressional Art Competition where his photography was displayed in the U.S. Capitol building.



Trenton's earlier years were shared between the Sierras of Northern California and the Suburbs of Washington D.C. which instilled in him a strong connection to the natural world and taught him to recognize the importance of community involvement. His work has taken him around the world with non-profit organizations including the Gesundheit Institute and the 2041 Foundation while providing visual media, managing web presence, and offering technical support along the way.

Paulina Villalonga, Student Program Leader

Paulina is currently completing a Bachelor's degree in History at the University of California, Berkeley. She has previously been on two 2041 Explorer's Passage expeditions in which she discovered a strong passion for the environment and adventure. In 2019, she walked the Last Degree to the South Pole in negative 40-degree weather alongside a team of 10 people who attempted to complete the expedition in the most sustainable way possible in harsh conditions.



Paulina is a skilled public speaker and fundraiser, and is interested in both environmental entrepreneurship and impact investing. Feeling inspired by Antarctica yet disillusioned with greenwashing and the lack of solutions in the climate change narrative, she decided to co-found The Big Suck LLC where she and her team are creating the world's first Carbon Removal (negative emissions technologies) documentary and committing to removing one million tons of carbon from the atmosphere through the First Million Campaign. Through her mission, she hopes to transform our approach to sustainability by adopting a technology-oriented solution that will ultimately help the Carbon Removal industry grow.